

Engine

Cummins III

Gross Power

92 kW (123 hp) @ 2,000 rpm

92 kW (123 hp) @ 2,200 rpm

Operating Weight

9,900 – 11,500 kg

Bucket Capacity

1.5 – 3.0 m³

835H

WHEEL LOADER



TOUGH WORLD. TOUGH EQUIPMENT.

MAXIMIZE YOUR RETURN ON INVESTMENT

TRANSMISSION

The new 4-speed ZF power shift transmission, including torque converter, provides maximum transfer of power to improve performance and fuel efficiency.

ADVANCED HYDRAULIC SYSTEM

LiuGong's new-generation advanced hydraulic system organizes the mechanical, electrical and hydraulic systems to work in perfect harmony. Power is supplied only as needed, achieving optimum efficiency.

DEPENDABLE POWER

Unmatched performance is driven by the Cummins Tier III Engine - maximizing torque output and delivering more power and breakout force at lower engine speeds.

Z-BAR LINKAGE

Optimized Z-Bar geometry positions the bucket closer to the tires, achieving high bucket breakout forces and stable transport of materials with minimal spillage.

VERSATILITY

The quick coupler helps you to get the most out of your machine by easily and quickly switching between a range of attachments to accommodate your needs.

EXTENSIVE VISIBILITY

The cabs curved front glass design and well positioned loader lift arms provide a broad visibility and easy line of sight to the bucket edge at ground level.



CONTROLS

Kick-down and forward/reverse buttons are conveniently located on the loader joystick for efficient operator use, reducing cycle times and improving productivity.

AFTER SALES SUPPORT

With over 2,650 outlets, you can feel confident that our dealers and regional offices will be there to support you with training, service and maintenance and expert advice for the life of your machine.

PARTS

Our extensive network of support is always there when you need it, from genuine LiuGong parts to expert service, to maximize your business profitability.

MORE POWER LESS CONSUMPTION

The new 835H wheel loader has much more to offer than high power and great productivity. In terms of **efficiency** and fuel consumption, the new LiuGong 835H integrates the strongest technologies, including a power shift transmission and advanced load sensing hydraulic system, allowing you to be far **more productive**.



FUEL WISE 6 CYLINDER ENGINE

The six cylinder, four stroke turbocharged and inter-cooled engine achieves Tier III emission regulations without compromising on power and strength. Specially configured and patented performance curve achieve high torque in low speed and maximum fuel efficiency over working cycles.

KEEP IT COOL

The cooling system has been totally redesigned providing better cooling and reduced noise. The new 6 mm hexagon grill design improves ventilation and suction type cooling system, single radiator layout, high efficiency, easy to maintenance.

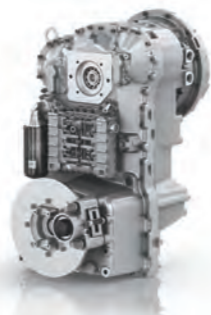
TRANSMISSION

The 835H offers a choice of smoothshifting ZF powershift transmissions: 4F/3R. The ZF transmission with gears powershift of forward 4 and reverse 3 performs great

speed acceleration even on slopes. The optimized gear ratios achieve smooth and fast shifts, which contribute to the high level of operator comfort. Highly concern about your safety, transmission prevents power from starting if the gearshift joystick is not in neutral. Kickdown function allows quick power shift between gear 1 and 2. All of these ensure considerable fuel cost saving, breakout force and improved loading capability.

AXLES

The 835H axles are designed to ensure all four wheels remain on the ground even in rough terrain. The front axle is rigidly mounted to the frame to support the entire weight of the wheel loader and the rear axle is designed to allow for $\pm 11^\circ$ oscillation, delivering greatly enhanced stability and traction.



ADVANCED LOAD SENSING HYDRAULIC SYSTEM

LiuGong's new-generation advanced hydraulic system ensures the mechanical, electrical and hydraulic systems work in perfect harmony. This technology perfectly matches the hydraulic flow with the operation. Power is only supplied as needed,

achieving optimal operational efficiency. LiuGong's load-sensing hydraulic system allocates power to the work and steering functions according to demand, ensuring fast response and excellent efficiency. Smooth, coordinated operation through superior control of both the boom and the attachment is easily achieved. Power is distributed efficiently based upon the operator's command and need of the job.



DESIGNED TO GET MORE DONE

The new 835H has a **redesigned** Z-bar and bucket that gives you the **maximum production** on the job site.

Z-BAR LINKAGE TO SUPPORT PAYLOAD PERFORMANCE

Our optimized Z-Bar geometry positions the bucket closer to the tires, achieving high bucket breakout forces with maximum rollback. Stable transport of materials with minimal spillage is easily achieved. The option of hydraulic quick coupler attachment adds versatility to Z-bar machines, allowing use of multiple tools to suit the job-site needs.

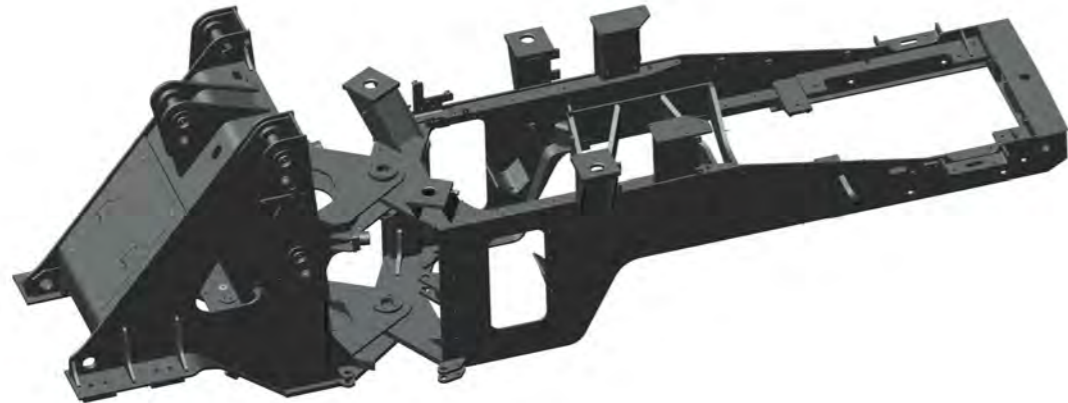
NEW BUCKET DESIGNED FOR BETTER PAYLOAD

The bucket of the newly designed 835H wheel loader has increased fill factor and material retention. The 835H loads more easily and carries more, which significantly increases productivity.



TOUGH & RELIABLE STRUCTURES

At every stage, LiuGong is committed to the design philosophy of **Reliability and Durability**. This principle has led to the creation of the 835H, making this new wheel loader a **smart choice** for companies looking for high profitability and peace of mind.



ENHANCED STRUCTURE

The chassis frame is the wheel loader's backbone. Particular care has been given to the design of this crucial structural component. Advanced analysis tools including dynamics and durability simulations have been utilized to ensure strong structure and extended machine life.

Z-BAR LINKAGE REINVENTED

The newly designed Z-bar is the main structure to support the payload. It is not only about strength and visibility but is also essential for durability and reliability. On the 835H, the Z-bar linkage has been reinvented by LiuGong engineers. The structure has been optimized for improved distribution of stress. Key components such as hinge pins and lift arm mounting plates are made from optimized materials, which have gone through a special heat treatment process for increased strength.



The use of world-class components is our commitment for extensive reliability and durability of every machine.

PROVEN ENGINE

The engine is the heart of the wheel loader and essential to performance over the life of the machine. The Weichai WP6G125E221 engine is well known in the industry having worked millions of hours of operation across hundreds of thousands of worksites. When designed into a LiuGong machine, this engine endures 20,000 hours of rigorous LiuGong field testing to ensure the proven quality and reliability of every machine.

LOW MAINTENANCE BRAKE SYSTEM

In-axle hydraulic brakes isolate the components from the external environment, ensuring a long working life and easy maintenance. The new lubrication system is designed to deliver better brake performance and dramatically reduce tire wear.

OPERATOR-FRIENDLY ENVIRONMENT

Ergonomically designed controls, increased **visibility** and convenient features all contribute to operator comfort and **overall productivity** on the job site.

EXTENSIVE VISIBILITY

The new 835H has been designed to offer optimized visibility. A panoramic view cab with curved front glass and with well-positioned lift arms allows the operator a clear line of sight to the bucket edge at

ground level. The view to machine corners is optimized and can be further enhanced with selection of the rear-view camera for an extra eye on the job site.

INSTRUMENT PANEL

The instrument panel displays all required information about the machine including hydraulic oil temperature, hydraulic pressure, service interval alerts and many other inputs.

EASY OF OPERATION

For easy operation, single pilot joystick give the operator simultaneous and precise control of the hydraulic system. Forward and reverse shifting and kick-down functions are positioned for optimum operator use, improving productivity and reducing operator fatigue.

FRESH AIR ALWAYS

The new 835H cab is designed with balanced air recycling ventilation to achieve positive pressure and continuous fresh air inside. A/C is equipped with eight all-around outlets to keep the cabin at a comfortable temperature at all times. The easy-to-replace air filter restricts dust and particles from entering the cab.

COMFORTABLE ENVIRONMENT

Cab design maximizes the space available in the cabin for the operator. The vertically and horizontally adjustable air suspension seat provides the operator benefits of maximum comfort and less fatigue. Thanks to the optimized design of the front glass, the new electric system, high quality sealing and the efficient cooling compartment, the sound level inside the cabin is minimized to: 83dB (A)



SAFETY WITHOUT COMPROMISE

LiuGong is **committed to safety** on the job site and the 835H wheel loader is equipped with all the necessary safety features for peace of mind so you can **focus** on the job at hand.



All-around visibility is supported by a rear view camera acting as an extra eye on the job site.

All LiuGong wheel loader cabs are **ROPS and FOPS** certified. **Slip resistant** tread plate and walkway handles provide a **safe access** environment for the operator and serviceman.

FOPS/ROPS CAB

Rollover Protection System on the cab (ROPS) is standard to ensure operator protection in the unlikely event of the machine rolling over. Falling Object Protection System (FOPS) is standard to guarantee extra peace of mind.

STEPS

The 4-bar steps are widely spaced to allow debris to fall through. Welded anti-slip bars keep the steps clean and safe. The spacing between the steps and the distance from the ground to the ladder meet ISO standards. Newly designed rear steps with concise styling are installed right between the counterweight and tire for the better protection.

SAFE ACCESS

Access to the front of the cab by the operator or serviceman is a new feature. The same anti-slip bars used on the egress steps are used here for maximum anti-slip protection. Well-positioned grab handles make access to the cab safer.



SERVICING MADE SIMPLE

The 835H boasts a number of **innovations** to make servicing and maintenance faster, easier, and more cost-effective, leaving you time to **focus on your business**.

EASY ACCESS

The torsional spring actuated, wide-opening fibreglass hood of the new 835H gives fast access to the engine and its easy-to-reach service points.

The cab filter has been relocated to the left side of the cab so it can be easily accessed for fast ground level servicing.

The electric control box is situated behind the operator's seat and centralizes all connecting lines allowing for quick reach and easy assessment.

The hydraulic oil gauge is clearly visible from ground level, making visual checks easy and efficient.



AUTOMATIC SYSTEMS

An automatic greasing system maximizes uptime, and the use of the operator-selectable, reversible fan function allows for effective self-cleaning, extending the manual radiator cooling intervals.

SAFE MAINTENANCE

Well-positioned anti-slip tapes and support railings provide superior grip to ensure improved safety for service staff during routine maintenance.



PART OF YOUR PERFORMANCE

No matter where you are **in the world**, we can ensure fast and efficient parts support to keep your going.



We know that what you want is to be confidence in your machinery. So we make sure we can always get what you need without delay, without fail, without excuses.

Anywhere, and at any time. That's more than our goal. That's our pledge.



GENUINE PARTS

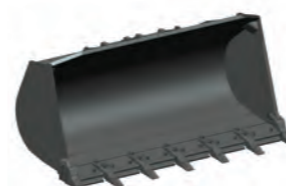
Using genuine LiuGong parts is the key to keeping your running costs low and your machine working in top order. Built for purpose and engineered to work perfectly together, our parts and components are rigorously tested to ensure they can stand up to the demands of all types of work environments.

LiuGong engineering sets high standards and all parts are rigorously tested to ensure they can meet the rigid quality specifications required for long lasting performance.

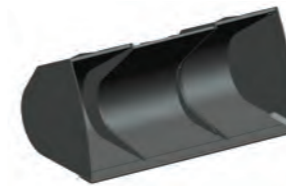
GET MORE FROM YOUR MACHINE

The new 835H is designed to work with a wide range of attachments to maximize the versatility of your machine. Simple and fast changeover of attachments are made possible thanks to the quick coupler and optimized Z-bar design.

The machine can be equipped with a range of general purpose, rock, grapple and light material buckets to 5.6 m³. Other specialized attachments and pallet forks give even more choice.



GENERAL PURPOSE



LIGHT MATERIAL



ROCK



SIDE-DUMP BUCKET



GRASS GRAPPLE



GRAPPLE WITH ALIGNED TEETH



GRAPPLE WITH CROSSED TEETH



FORKS



WHERE YOU NEED US WHEN YOU NEED US

LiuGong is committed to providing **reliable** and **tough** equipment combined with dependable service to customers **across the globe**.



We offer local support through our extensive dealer network in more than 130 countries. Our dealers and customers are supported by 12 regional subsidiaries and 9 global parts centers, all offering expert training, parts and service support.

PROFESSIONAL ADVICE

No matter the job, we can help you choose the right machine, with the right specifications, options and attachments for your business. We are committed to ensure maximum uptime and lowest cost of ownership to ensure you get good profitable return from your equipment.



SERVICE AGREEMENTS

At LiuGong, we offer service agreements to support your business needs and help you take control of all your costs. Talk to us today.



SPECIFICATIONS

OPERATING WEIGHT 10,300 kg

Operating weight includes the machine weight with standard work device, no additional equipment or accessories, full fuel tank, all fluids at required level and an operator 75 kg.

BUCKET CAPACITY 1.5 - 3.0 m³

ENGINE

Description
 Cummins Tier III, 6.75 liter, 6-cylinder straight turbocharged diesel engine with Common Rail fuel injection system
 Cummins turbocharged system, high transient response .
 Air cleaning: Whirlwind pre filter, two stage air filter .
 Cooling system: Air-to-air intercooler, direct driven fan and suction type cooling system, single radiator layout .

Emission rating	EPA Tier 3
Make	Cummins
Model	WP6G125E201 (305D transmission) WP6G125E221 (158 transmission)
Engine Output - Gross (SAE J1995 / ISO 14396)	92 kW (123 hp) @ 2,000 rpm (305D transmission) 92 kW (123 hp) @ 2,200 rpm (158 transmission)
Engine Output - Net (SAE J1349 / ISO 9249)	85 kW (114 hp) @ 2,000 rpm (305D transmission) 85 kW (114 hp) @ 2,200 rpm (158 transmission)
Peak torque	560 N.m
Displacement	6.75 L
Number of cylinders	6
Aspiration	Turbocharged & air-to-air intercooled

AXLES

Model	LiuGong (Dry type)
Differential front type	Conventional
Differential rear type	Conventional
Axle oscillation	±11°

TRANSMISSION(BS305D TRANSMISSION)

Description
 Torque converter: double-stage, four elements.
 Transmission: ZF158 full auto with FNR
 Gearshifting system: Number of speeds, forward-2, revers-1. compact, high efficiency, low noise, easy to operation.

Transmission type	Planetary, power shift
Torque converter	Double stage, four elements
Maximum travel speed, fwd	37 km/h
Maximum travel speed, rev	15.5 km/h
Number of speed, fwd	2
Number of speed, rev	1

HYDRAULIC SYSTEM

Description
 System supply: Two gear pumps with fix displacement. The steering function always has priority.
 Valves: Double-acting 2-spool valve. The main valve is controlled by a 2-spool pilot valve.
 Lift function: The valve has four positions: lift, hold, lower, and float. Inductive/magnetic automatic boom kick-out can be switched on and off and is adjustable to two positions: bucket at ground level and maximum reach full lifting height.
 Tilt function: The valve has three functions: rollback, hold and dump.
 Cylinders: Double-acting cylinders for all functions.
 Filter: Full-flow filtration through 12 micron (absolute) filter cartridge.

MODEL	BS305D	ZF 4WG158
Main pump type	Gear	Gear
Main relief pressure	18 MPa	18 MPa
Raise	4.7 s	5.0 s
Dump time	1.0 s	1.1 s
Float down time	3.1 s	3.1 s
Fastest total cycle time	8.8 s	9.2 s
Controls	Flexible shaft	Joystick

TRANSMISSION(ZF 4WG 158 TRANSMISSION)

Description
 Torque converter: single-stage, three elements.
 Transmission: ZF 4WG 158 countershaft transmission, integrated pilot single joystick with FNR, KD and horn. Continuous power in gears shift and less compact.
 Gearshifting system: ZF Automatic Power Shift
 with auto modes (1~4/2~4) all start in gear 2, faster and better for long distance material transport.

Transmission type	Countershaft, power shift
Torque converter	Single stage, three elements
Maximum travel speed, fwd	36 km/h
Maximum travel speed, rev	23.5 km/h
Number of speed, fwd	4
Number of speed, rev	3

STEERING

Description
 Steering system: Load-sensing hydraulic articulated steering.
 System supply: The steering system has priority feed from a gear pump with fix displacement.
 Steering cylinders: Two double-acting cylinders.
 Steering configuration Articulated
 Steering relief pressure 17.2 Mpa
 Steering cylinders 2
 Cylinder bore 80 mm
 Rod diameter 45 mm
 Stroke 420 mm
 Maximum flow 210 L/min
 Maximum articulation ±40°
 Smallest turn (over tire) 5,090 mm

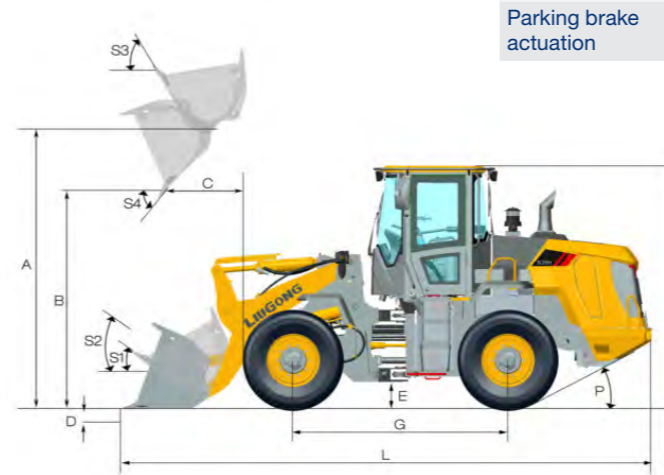
ELECTRICAL SYSTEM

Description
 The central warning system is a conronic electrical system with central warning light and buzzer for the following functions: Serious engine fault, low steering system pressure, interruption in communication (computer failure)
 A central warning light and buzzer when the gear is engaged is for the following functions: Low engine oil pressure, low transmission oil pressure, high transmission oil temperature, low brake pressure, engaged parking brake, brake charging failure, high hydraulic oil temperature.

Voltage	24 V
Batteries	2 x 12 V
Battery capacity	2 x 120 Ah
Cold cranking capacity, approx	850 A
Reserve capacity	230 min
Alternator rating	1,960/70 W/A
Starter motor output	4.8 kW

CAB

Description
 Instrumentation: All important information is centrally located in the central instrument panel and operator's field of vision. Large curved front glass, rear mirrors ensure great visibility.
 Adjustable steering column, high back seat, armrest box and A/C with all-around air outlets.
 Pressurized cab with lower interior noise. The cab is tested and approved according to ROPS (ISO 3471), FOPS (ISO 3449).



SOUND & ENVIRONMENT

Sound level in cab according to ISO 6396-2008/EN ISO 3744-1995	82 dB(A)-- Travel mode
Sound level in cab according to ISO 6396-2008/EN ISO 3744-1995	83 dB(A)-- Stationary work cycle mode
External sound level according to ISO 6395-2008	107 dB(A)-- Travel mode
External sound level according to ISO 6395-2008	108 dB(A)-- Stationary work cycle mode
Ventilation	9.2 m ³
Heating capacity	5.8 kW
Air Conditioning	6 kW

SERVICE REFILL CAPACITIES

Fuel tank	140 L
Engine oil	18 L
Cooling system	35 L
Hydraulic system	88 L
Transmission and torque converter	45 L (305D transmission) 40 L (200 transmission)
Axles, each	41 L

BRAKES

Description
 Two independent brake circuits, accurate control with the main valve & gear pump.

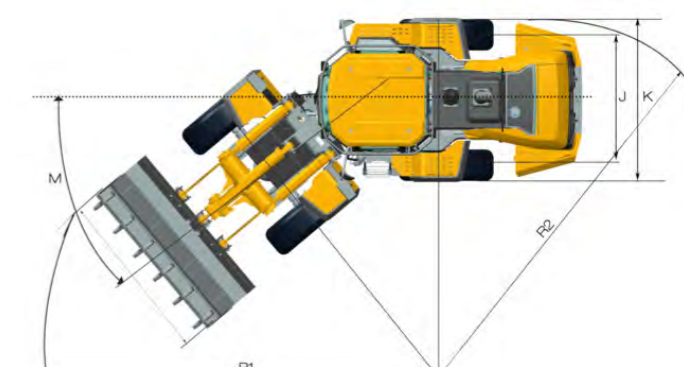
Service brake type	Caliper discs brake, two independent circuits
Service brake actuation	Air over hydraulic
Parking brake type	Manual electronic control
Parking brake actuation	Mechanical

LOADER ARM PERFORMANCE WITH ATTACHMENT

Tipping load – straight	7,800 kg
Tipping load – full turn	6,700 kg
Bucket breakout force	105 kN
A Maximum hinge pin height	3,730 mm
B Dump clearance at full height discharge	2,920 mm
C Dump reach at full height discharge	1,014 mm
D Maximum digging depth, bucket level	40 mm
S1 Bucket rollback at ground level	41°
S2 Bucket rollback at carry	48°
S3 Bucket rollback at maximum height	61°
S4 Maximum dump angle at full height	45°

DIMENSIONS

E Ground clearance	345 mm
G Wheelbase	2,870 mm
H Cab height	3,232 mm
J Wheel tread	1,850 mm
K Width over tires	2,300 mm
L Length with bucket down	7,010 mm
M Turn angle, either side	40°
P Rear angle of departure	29°
R ₁ Turning radius, bucket carry	5,600 mm
R ₂ Turning radius, outside of tire	5,090 mm



TIRES

Choosing the right tires for your machine will become a key competitive advantage to achieve outstanding performance. Through close engineering and development cooperation with renowned and carefully selected suppliers, Liugong can offer a full range of tires specially tailored for wheel loaders.

Code	Application	Patterns	Size	PR / *	Tube Type	Width, mm (ft/in)	Overall Diameter, mm (ft/in)	Tread Depth, mm (ft/in)	Load Capacity, 50 km/h / 10 km/h, kg
L2	<ul style="list-style-type: none"> where good traction is needed, e.g. at grading work in soft and muddy operation where sharp stones don't occur in all load/carry operations 		17.5 - 25	12	TL	445 mm	1,350 mm	25 mm	3,650 / 6,150 kg
			17.5 - 25	16	TL	445 mm	1,350 mm	25 mm	4,250 / 7,300 kg
L3	<ul style="list-style-type: none"> in sand operation in all kind of load/carry operation the L3-tread is not as open as L2 and has consequently less self-cleansing compared with an L2 tyre 		17.5 - 25	14	TL	445 mm	1,350 mm	26 mm	3,930 / 6,700 kg
			17.5 - 25	16	TL	445 mm	1,350 mm	26 mm	4,250 / 7,300 kg
			17.5 - 25	20	TL	445 mm	1,350 mm	26 mm	5,000 / 8,250 kg
			17.5 R 25	*	TL	445 mm	1,345 mm	29 mm	7,100 / 4,125 kg
			17.5 R 25	**	TL	445 mm	1,345 mm	29 mm	8,500 / 5,450 kg
L5	<ul style="list-style-type: none"> in very aggressive material where good protection against cut damages is demanded, e.g. in quarries or mines 		17.5 R 25	*	TL	445 mm	1,415 mm	64 mm	7,100 kg @ 10 km/h
			17.5 R 25	**	TL	445 mm	1,415 mm	64 mm	8,500 kg @ 10 km/h

Note: The radial tire-load bearing capacity is indicated by the number of stars (*). The more stars, the greater the radial tire-load bearing capacity. For the specific radial tire sizes listed in the table above, 2 stars (**) represents the maximum radial tire-load bearing capacity.

ATTACHMENTS

Liugong attachments with pin-on or quick-coupler ensure high quality. The integrated design of the system creates a perfect match to achieve superior productivity.

Type	Capacity m³ (yd³)	Width mm (ft/in)	Height mm (ft/in)	Digging Depth mm (ft/in)	Dump Clearance mm (ft/in)	Dump Reach mm (ft/in)	Description
General Purpose	1.8 m³	2,460 mm	1,158 mm	40 mm	2,920 mm	1,015 mm	Anti-Wear Blade with Welded Teeth
	2.0 m³	2,456 mm	1,195 mm	40 mm	2,850 mm	1,089 mm	Anti-Wear Blade with Bolt-on Cutting Edge and Bolt-on Teeth.
	2.2 m³	2,537 mm	1,219 mm	40 mm	2,850 mm	1,089 mm	Bolt-on Cutting Edge; Bolt-on Teeth; Bolt-on Cutting Edge and Bolt-on Teeth.
Light Material	2.5 m³	2,716 mm	1,204 mm	46 mm	2,780 mm	1,074 mm	Bolt-on Cutting Edge.
	3.0 m³	2,766 mm	1,264 mm	56 mm	2,730 mm	1,189 mm	Bolt-on Cutting Edge.
Rock	1.5 m³	2,526 mm	1,134 mm	78 mm	2,865 mm	980 mm	V-Shape Anti-Wear Blade.
Grapple	Φ600 mm	2,030 mm	1,223 mm	46 mm	2,778 mm	1,216 mm	Aligned Teeth.
	Φ400 mm	1,527 mm	1,600 mm	46 mm	2,575 mm	980 mm	Crossed Teeth.



STANDARD EQUIPMENT

ENGINE

- Cummins Tier III Engine output net 85 kW (114 hp) air-to-air intercooled, 6 cylinders, 4 stroke
- Mechanical high pressure common rail
- Pre-filter with water separator
- Fuel filter
- Direct driven fan
- Flame Cold Start

TRANSMISSION (LIUGONG BS305D)

- ZF158full auto with FNR
- Cable manual control, power shift

TRANSMISSION (ZF 4WG158)

- ZF 4WG158 semi-automatic power shift transmission
- Kick-down function, FNR, F4/R3
- Transmission oil level sight gauge
- Secondary oil filter, oil stick
- Remote pressure taps for diagnostics
- Auto shifting mode by speed
- Interlock between parking brake and gear shifting

AXLE

- Liugong dry axle without limited slip differentials
- Caliper discs service brake system
- Parking brake service as secondary

HYDRAULIC SYSTEM

- Two gear pumps with fix displacement hydraulic load-sensing
- Flexible shaft control
- Plug at the port of bucket and boom cylinder for pressure check
- Emergency boom lower via pilot accumulator
- Pilot single joystick
- Emergency steering
- Ride control

HYDRAULIC SYSTEM (ZF 4GW158)

- Two gear pumps with fix displacement hydraulic load-sensing
- Single joystick control
- Boom kick-out, automatic
- Bucket positioner, automatic
- Plug at the port of bucket and boom cylinder for pressure check
- Emergency boom lower via pilot accumulator

STEERING SYSTEM

- Load sensing system with flow amplification and steering priority

TIRE & RIM

- 17.5-25/L3 radial tyre
- Normal fender

CHASSIS FRAME

- Spacious central articulation arrangement with conic bearing
- Articulation locking bar
- Tow hitch
- Rubber cushion articulation stops

LINKAGE & ATTACHMENTS

- Z-bar linkage
- Quick hitch

ELECTRIC SYSTEM

- Two front lights with high/low beam
- Two front headlights on top of cab
- Two rear headlight on top of cab
- Turn signals with flasher
- Batteries, free of maintenance
- Cigarette lighter, 24 V power outlet
- Electric horn
- Front windshield wiper
- Electronic device compartment

- Back-up alarm
- Radio/player with USB port
- Reversing warning light, automatic

GAUGE GROUP

- Engine coolant temperature
- Transmission oil temperature
- Fuel level
- Hour meter
- Voltage
- Brake oil pressure

INDICATOR GROUP

- Intake air filter alert
- Battery charging
- Parking brake applied
- Machine emergent stop
- Power cut-off
- Engine servicing
- Turning lights
- Transmission oil pressure alarm
- Engine starter running
- Beam of front light

CAB

- Seat - air suspension with 3 inch seat belt
- 2-way adjustable steering column
- Large curved front glass
- Rubber cab mounts
- Cab fresh air filter
- One interior & dual exterior rear-view mirrors

OTHERS

- Manual central lubrication
- Flash beacon
- Rear view camera
- Fuller fender
- Extra counterweight

OPTIONAL EQUIPMENT

ENGINE

- Cold start aid
- Oil bath double air filter

HYDRAULIC SYSTEM (LIUGONG BS305)

- Third valve and multipurpose lines

HYDRAULIC SYSTEM (ZF 4WG158)

- Third valve and multipurpose lines

TIRE & RIM

- See tires options
- Full fender
- Tire protective chain

CAB

- Certified FOPS (ISO 3449) and ROPS (ISO 3471) cab
- Heated air suspension seat
- Heated external rear view mirrors
- Cab dust removal device
- Front windshield screen (must be mounted at factory)
- Sun visors
- Fire extinguisher
- Cab rear windshield defroster

LINKAGE & ATTACHMENTS

- Quick coupler
- Additional counterweight
- High/extra-high linkage

- Bolt-on wear-resist blade and teeth
- Rock bucket
- Grapple with aligned or crossed teeth
- Fork
- Snow blade

OTHERS

- Automatic central lubrication
- Weight scale (Electric load weigher)
- Hood protective guard
- License-plate bracket and light
- Rotating beacon
- Transmission protective guard



AWD Group
25 Gamer Place
INGLEBURN NSW 2565
T: 1300 888 479
E: sales@awdgrp.com.au
www.awdgrp.com.au

Like and follow us:



LG-PB-835H-T2-WW-A4-112017-ENG

LiuGong series of logos herein, including but not limited to word marks, device marks, letter of alphabet marks and combination marks, as the registered trademarks of Guangxi LiuGong Group Co., Ltd. are used by Guangxi LiuGong Machinery Co., Ltd. with legal permission, and shall not be used without permission. Specifications and designs are subject to change without notice. Illustrations and pictures may include optional equipment and may not include all standard equipment. Equipment and options varies by regional availability.