

KOBELCO

Performance  Design

SK380SRLC

- Bucket capacity:
1.20 m³
- Engine power:
210 kW / 1,900 min⁻¹
- Operating weight:
36,800 – 38,600 kg



We Save You Fuel
Achieving a Low-Carbon Society



SK380SR_{LC}



Performance Design

With the release of the SK380SRLC, KOBELCO has completely harmonised the values of PERFORMANCE and DESIGN.

The SK380SRLC delivers greater efficiency and productivity with increased power and speed, along with uncompromising operator comfort and machine operability.

In the pursuit of producing unique and unbeatable machines that provide comfort and productivity without equal, KOBELCO continues to rise to the challenge.

THE ULTIMATE SLEEK AND STYLISH CAB DESIGN

True ergonomic functionality combined with modern design has resulted in a cabin interior that is sleek and comfortable, built for simplicity and operator comfort.

Jog dial

The jog dial integrates multiple functions to allow for simple navigation of machine information screens, even while wearing gloves.

LED backlights

LED backlighting on switches and dials provides a bright, clear view of controls, even in the dark, while delivering a premium look and feel.







UNFORGETTABLE COMFORT

Air suspension seat

A GRAMMER* seat is installed as standard equipment, which achieves excellent shock absorption and superior ride comfort.

*GRAMMER is trademark of GRAMMER AG, registered in Germany and other countries.

Optimal air conditioning vent placement

Air conditioning vents are optimally placed around the cabin with air flow directed toward the operator's neck and back, providing more comfortable operation.

Ergonomic and low-effort pilot control levers

Pilot control levers are mounted on adjustable consoles, with an ergonomic design that allows movement without twisting, reducing operator fatigue.



New Hydraulic Control

Our newly upgraded hydraulic control system responds to shorter lever strokes than current models, delivering swifter, more precise movement and improved lever operability.

LED door light

The LED interior light automatically turns on when the door is opened or when the ignition is set to OFF. This ensures easy entry and exit at nighttime.



KOBELCO



04:33



SETTING MENU



PICTURE OF
CAMERA



CLOCK
SETTING



SCREEN
BRIGHTNESS



MAINTENANCE



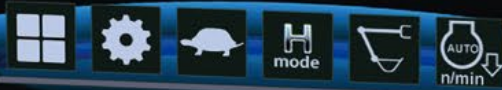
CONSUMPTION



LANGUAGE
SELECTION



PRESSURE
RELEASE



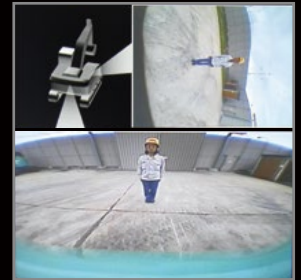
A WIDER VIEW BRINGS A WIDER RANGE OF USE

10-inch colour monitor—the largest in the industry

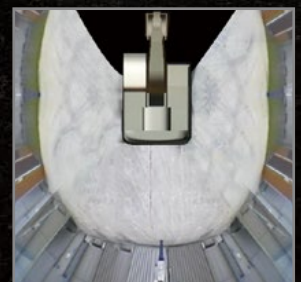
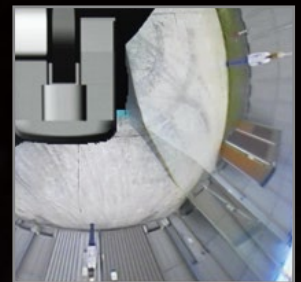
The easy-to-operate menu screen facilitates easy reading and navigation. Images from the built-in cameras can be checked on the large screen, which helps to improve safety. In addition, each icon is easily recognisable.



The right camera and rear camera (right side view mode)



The right camera and rear camera (straight view mode)



SAFETY ON FULL DISPLAY

Our high-resolution, large display shows right, left and rear side cameras together. Multiple camera modes allow operators to customise their display based on their needs to enhance awareness and jobsite safety.



Screen display linked with the jog dial operation

The jog dial provides simple and intuitive control of all display screens. Turn the jog dial to the right or left to select an item and press the dial to confirm the selection.

IDEAL FOR URBAN WORK SITES WITH A WIDE WORKING RANGE

Minimal swing radius improves efficiency

The tail of the upper body extends very little past the crawlers, so the operator can concentrate on the job at hand. This also reduces the risk of collision damage.

Easy workability even in Close Quarters

The compact design allows continuous 180° dig, and load operations within a working space of just 5.35m.



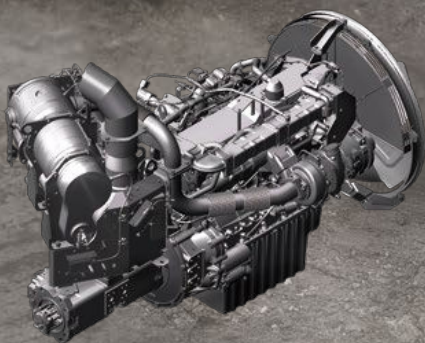
Figures above show the value for standard boom and standard arm spec.

THE NEXT LEVEL OF PERFORMANCE

Improved Efficiency, plus a Tier IV Final Compliant Engine

The new SK380SRLC is equipped with an Isuzu Tier IV Final compliant engine, which has a higher torque value.

This engine is fitted with a diesel oxidation catalyst (DOC) and an SCR device to control emissions without using a diesel particulate filter (DPF).



Model: ISUZU 6HK1

Engine output

210 kW/1,900 min⁻¹

Power Boost

When you need more power instantly, engage Power Boost to get 10% more power with no time limit.

■ Max. Bucket Digging Force (Arm 3.10 m)

Normal: **189** kN

With Power Boost: **208** kN

■ Max. Arm Crowding Force (Arm 3.10 m)

Normal: **126** kN

With Power Boost: **139** kN



EXCELLENT LIFTING PERFORMANCE IN NARROW SPACES

Drawbar Pulling Force (SAE)

Excellent drawbar force lets you conquer rough terrain and slopes.

314 kN

Lift Capacity

12,390 kg

(Reach: 6.00m Boom:6.20m Arm: 3.10m Bucket: Without Shoe: 600mm <Heavy Lift> At Ground Level)

Heavy Lift

This switch is used when lifting a heavy load and increased power is required. Heavy Lift provides 10% more hydraulic pressure and provides greater lifting power at close radius. This allows for a smooth and steady operation while moving heavy objects.





GREATER MULTI-FUNCTION CAPABILITIES

Attachment mode

The flow-rate modes of the bucket, breaker, nibbler, and rotating grapple are set before delivery, which allows you to start operating immediately.

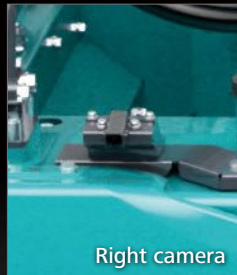
Mode settings for other attachments, such as the tilt rotator, can easily be added or changed.



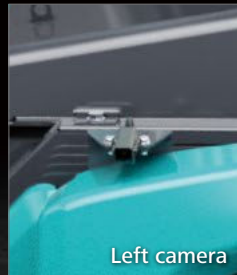
CONVENIENT AND SENSIBLE EQUIPMENT



Rear camera



Right camera



Left camera

Standard Rear, Left and Right Side Cameras



Swing flashers for a safer job site



Arm



Boom



Bucket link



Counterweight

Machine Guidance Ready Brackets

Pre-welded brackets for quicker and easier installation of Machine Guidance Systems.



Seatbelt Unfastened Indicator On Monitor



Console mount

The console-integrated seat allows for comfortable operation.



AM/FM Bluetooth® (hands-free) radio

Audio streaming and hands free phone calling capability.



USB port/12 V power outlet



Smartphone holder

You can use the holder with your smartphone connected to the USB port.



Engine start password

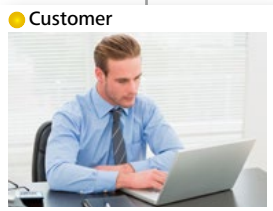
A password is required when starting the engine for greater security.



Wiper adjustment function

In addition to the intermittent wiper mode and continuous wiper mode, the one-time wiper mode was added.

Excavator Remote Monitoring System



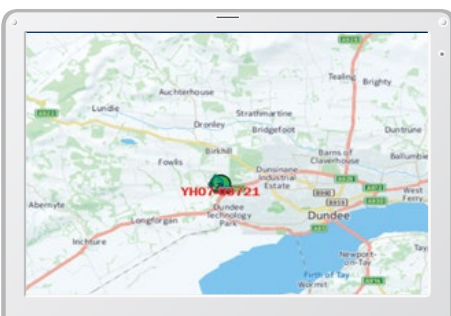
Remote Monitoring for Peace of Mind

GEO SCAN uses satellite communication and internet to relay data, and therefore can be deployed in areas where other forms of communication are difficult. When a hydraulic excavator is fitted with this system, data on the machine's operation, such as operating hours, location, fuel consumption, and maintenance status can be obtained remotely.

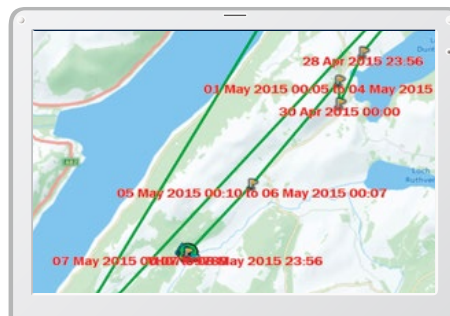
Direct Access to Operational Status

Location Data

• Accurate location data can be obtained even from sites where communications are difficult.



Latest location



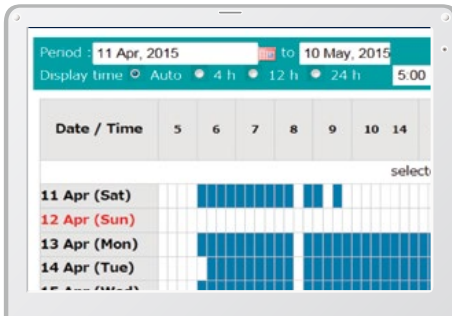
Location records

Period	11 Apr. 2015	to	10 May, 2015	Search
Type of Operation	Working Hrs		Ratio	
Total Working Hrs	169 Hrs		100 %	
Digging Hrs	72.2 Hrs		43 %	
Traveling Hrs	18.3 Hrs		11 %	
Idle Hrs	15.9 Hrs		9 %	
Opt Att Hrs	62.5 Hrs		37 %	
Crane Mode Hrs	0 Hrs		0 %	

Work data

Operating Hours

- A comparison of operating times of machines at multiple locations shows which locations are busier and more profitable.
- Operating hours on site can be accurately recorded, for running time calculations needed for rental machines, etc.



Daily report

Fuel Consumption Data

- Data on fuel consumption and idling times can be used to indicate improvements in fuel consumption.

Work mode	Working Hrs	Total Fuel Consumption
H mode	2:06	24.5 L
S mode	0:00	0.0 L
E mode	169:19	1489.7 L
TOTAL	171:25	1514.2 L

Fuel consumption

Graph of Work Content

- The graph shows how working hours are divided among different operating categories, including digging, idling, travelling and optional operations.



Work status

Maintenance Data and Warning Alerts

Machine Maintenance Data

- Provides maintenance status of separate machines operating at multiple sites.
- Maintenance data is also relayed to KOBELCO service personnel, for more efficient planning of periodic servicing.

Model	Serial No.	Hour Meter	Engine Oil
SK135SRLC-3/SK140SRL	YH07-09721	734 Hr	434
SK135SRLC-3/SK140SRL	YH07-09789	73 Hr	429
SK210LC-9	YQ13-10454	960 Hr	58
SK210LC-9	YQ13-10481	549 Hr	498
SK75SR-	YT08-30374		

Maintenance

Warning Alerts

- This system gives an alert if an anomaly is sensed, preventing damage that could result in machine downtime.

Alarm Information Can Be Received via E-mail

- Alarm information or maintenance notice can be received via e-mail, using a computer or a mobile device.



Alarm messages can be received on a mobile device.

Daily/Monthly Reports

- Operational data downloaded onto a computer helps in formulating daily and monthly reports.

Security System

Engine Start Alarm

- The system can be set up with an alarm if the machine is operated outside designated time.

Engine start alarm outside prescribed work time

Area Alarm

- It can be set up with an alarm if the machine is moved out of its designated area to another location.

Alarm for outside of reset area

EASY MAINTENANCE



Standard Overhead Top Guard Level II

The standard overhead cab guard can be tilted open with gas damper* for easy window cleaning. Meets standard top guard level II requirements. (ISO 10262)



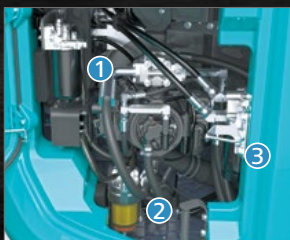
Two-Stage Air Filter



Ground level storage compartment access



Ground level DEF tank

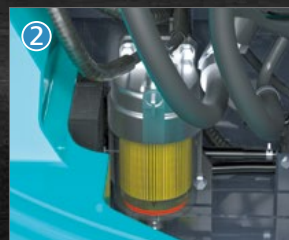


Right Side (Ground Level Maintenance)

Hydraulic pump and engine filter compartment.



Fuel Filter



Pre-Filter with Integrated Water Separator



Engine Oil Filter

Note: AdBlue® is a registered trademark of the Verband der Automobilindustrie e.V. (VDA).

*Gas damper is not applicable for 2 piece boom specification.

Specifications

Engine

Model	ISUZU 6HK1
Type	Direct injection, water-cooled, 4-cycle diesel engine with turbocharger, intercooler, Tier IV Final certified
No. of cylinders	6
Bore and stroke	115 mm x 125 mm
Displacement	7.790 L
Rated power output	198 kW/1,900 min ⁻¹ (ISO 9249: with fan)
	210 kW/1,900 min ⁻¹ (ISO 14396: without fan)
Max. torque	1,011 N·m/1,500 min ⁻¹ (ISO 9249: with fan)
	1,080 N·m/1,500 min ⁻¹ (ISO 14396: without fan)

Hydraulic system

Pump	
Type	Axial piston pumps + extra gear pump + pilot gear pump
Max. discharge flow	2 x 245 L/min, 1 x 44.3 L/min, 1 x 19.0 L/min
Relief valve setting	
Boom, arm and bucket	34.3 MPa {350 kgf/cm ² }
Power Boost	37.8 MPa {385 kgf/cm ² }
Travel circuit	34.3 MPa {350 kgf/cm ² }
Swing circuit	29.0 MPa {296 kgf/cm ² }
Control circuit	5.0 MPa {50 kgf/cm ² }
Pilot control pump	Gear type
Main control valves	8-spool
Oil cooler	Air cooled type

Swing system

Swing motor	One fixed displacement piston pump
Parking brake	Wet multiple plate
Swing speed	9.2 min ⁻¹
Swing torque	122.1 kN (SAE)

Attachments

Backhoe bucket and combination

Use	Backhoe bucket	
	Normal digging	
Bucket capacity	ISO heaped	m ³
Opening width	With side cutter	mm
	Without side cutter	mm
No. of teeth		
Bucket weight		kg
Combination	2.40 m short arm	○
	3.10 m standard arm	◎
	3.65 m Long arm	△

◎ Standard ○ Recommend △ Loading only

Travel system

Travel motors	2 x axial-piston, two-step motors
Parking brakes	Wet multiple plate
Travel shoes	48 each side
Travel speed	5.1/3.1 km/h
Drawbar pulling force	314 kN (SAE)
Gradeability	70 % {35°}

Cab & control

Cab

All-weather, sound-suppressed steel cab mounted on the silicon-sealed suspension mounts and equipped with a heavy, insulated floor mat.

Control

Two hand levers and two foot pedals for travel

Two hand levers for excavating and swing

Electric rotary-type engine throttle

Boom, arm & bucket

Boom cylinders	145 mm x 1,361 mm
Arm cylinder	150 mm x 1,675 mm
Bucket cylinder	130 mm x 1,208 mm

Refilling capacities & lubrications

Fuel tank	350 L
Cooling system	41.2 L
Engine oil	48.6 L
Travel reduction gear	2 x 7.5 L
Swing reduction gear	1 x 7.4L
Hydraulic oil tank	245 L tank oil level
	440 L hydraulic system
DEF/Urea tank	20.7L

Specifications

Working ranges

Unit: mm

Boom		6.20 m		
Arm		Short 2.40 m	Standard 3.10 m	Long 3.65 m
Range				
a- Max. digging reach		10,300	10,930	11,500
b- Max. digging reach at ground level		10,090	10,740	11,320
c- Max. digging depth		6,290	6,990	7,550
d- Max. digging height		10,780	11,170	11,660
e- Max. dumping clearance		7,750	8,150	8,610
f- Min. dumping clearance		3,870	3,110	2,570
g- Max. vertical wall digging depth		5,690	6,110	6,840
h- Min. swing radius		3,560	3,450	3,530
i- Horizontal digging stroke at ground level		3,990	5,590	6,320
j- Digging depth for 2.4 m (8') flat bottom		6,100	6,830	7,400
Bucket capacity ISO heaped m ³		1.20		

Digging force (ISO 6015)

Unit: kN

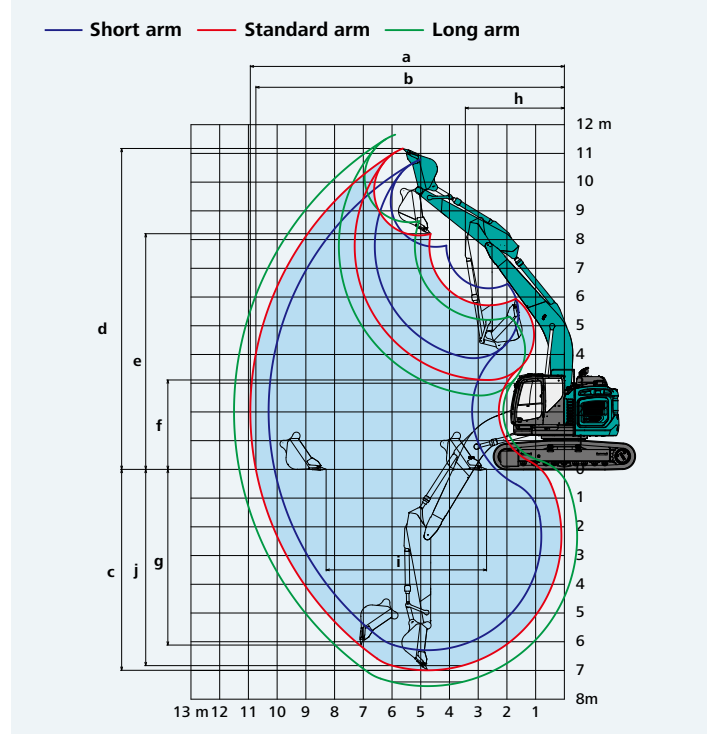
Arm length	Short 2.40 m	Standard 3.10 m	Long 3.65 m
Bucket digging force	189 208*	189 208*	188 208*
Arm crowding force	158 174*	126 139*	114 125*

*Power Boost engaged.

Dimensions

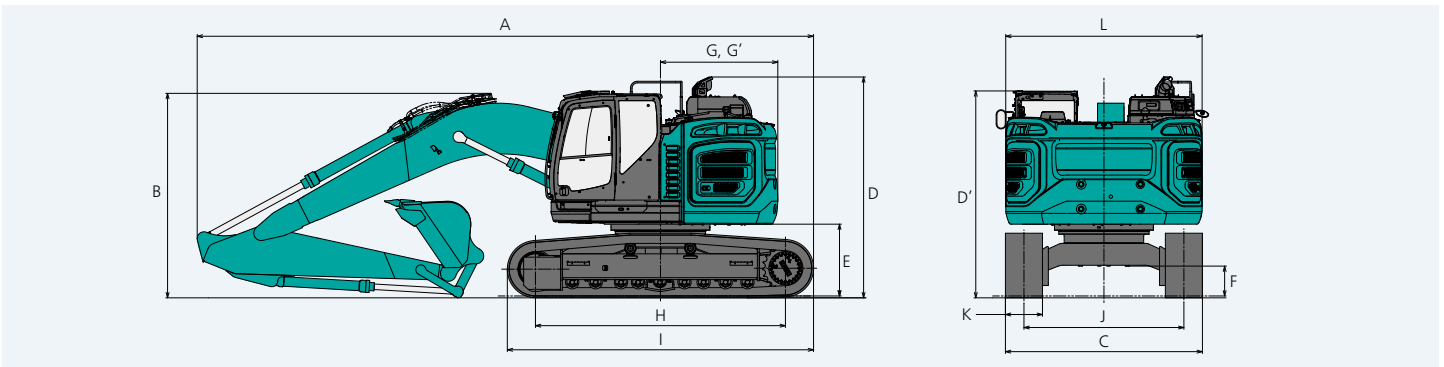
Unit: mm

Arm length	Short 2.40 m	Standard 3.10 m	Long 3.65 m
A Overall length	10,100	9,980	10,090
B Overall height (to top of boom)	3,520	3,310	3,700
C Overall width	3,190		
D Overall height (to top of muffler)	3,580		
D' Overall height (to top of cab)	3,350		
E Ground clearance of rear end*	1,160		



F Ground clearance*	485
G Tail swing radius	1,900
G' Distance from center of swing to rear end	1,900
H Tumbler distance	4,050
I Overall length of crawler	4,960
J Track gauge	2,590
K Shoe width	600
L Overall width of upper structure	3,180

*Without including height of shoe lug



Operating weight & ground pressure

In standard trim, with standard boom, 2.40 m arm, and 1.20 m³ ISO heaped bucket

Type of Grouser	Triple grouser				Double grouser	
Shoes	mm	600	700	800	850	600
Overall width of crawler	mm	3,190	3,290	3,390	3,440	3,190
Ground pressure	kPa	69	60	53	51	70
Operating weight	kg	36,800	37,600	38,000	38,200	37,300

In standard trim, with standard boom, 3.10 m arm, and 1.20 m³ ISO heaped bucket

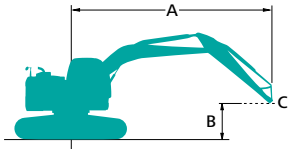
Type of Grouser	Triple grouser				Double grouser	
Shoes	mm	600	700	800	850	600
Overall width of crawler	mm	3,190	3,290	3,390	3,440	3,190
Ground pressure	kPa	69	61	54	51	70
Operating weight	kg	37,000	37,800	38,200	38,400	37,500

In standard trim, with standard boom, 3.65 m arm, and 1.20 m³ ISO heaped bucket

Type of Grouser	Triple grouser				Double grouser	
Shoes	mm	600	700	800	850	600
Overall width of crawler	mm	3,190	3,290	3,390	3,440	3,190
Ground pressure	kPa	70	61	54	51	71
Operating weight	kg	37,200	38,000	38,400	38,600	37,700

Lift Capacities

SK380SRLC
SK380SRLC-7



Rating over front



Rating over side or 360 degrees

A - Reach from swing centerline to arm top
B - Arm top height above/below ground
C - Lift point
Relief valve setting: 37.8 MPa (385 kgf/cm²)

SK380SRLC		Boom: 6.20 m Arm: 2.40 m Bucket: without Counterweight: 9,000 kg Shoe: 600 mm (Heavy Lift)										
A \ B		3.0 m		4.5 m		6.0 m		7.5 m		At Max. Reach		Radius
9.0m	kg									*8,950	*8,950	5.04 m
7.5m	kg					*8,630	*8,630			*7,680	7,080	6.72 m
6.0m	kg			*10,240	*10,240	*9,010	8,450	*8,510	5,870	*7,230	5,540	7.74 m
4.5m	kg			*13,030	12,370	*10,150	8,040	*8,840	5,720	*7,150	4,780	8.36 m
3.0m	kg					*11,540	7,550	9,330	5,500	*7,340	4,410	8.67 m
1.5m	kg					*12,610	7,150	9,090	5,280	7,310	4,290	8.71 m
G.L.	kg			*15,460	10,410	12,440	6,940	8,940	5,150	7,530	4,390	8.47 m
-1.5m	kg	*11,100	*11,100	*16,530	10,460	12,390	6,890	8,920	5,130	8,260	4,790	7.94 m
-3.0m	kg	*18,730	*18,730	*14,550	10,650	*11,150	7,010			*8,880	5,720	7.03 m
-4.5m	kg			*10,840	*10,840					*8,260	8,180	5.58 m

SK380SRLC		Boom: 6.20 m Arm: 3.10 m Bucket: without Counterweight: 9,000 kg Shoe: 600 mm (Heavy Lift)												
A \ B		3.0 m		4.5 m		6.0 m		7.5 m		9.0 m		At Max. Reach		Radius
9.0m	kg					*5,380	*5,380					*4,790	*4,790	6.10 m
7.5m	kg					*7,420	*7,420	*4,530	*4,530			*4,240	*4,240	7.53 m
6.0m	kg					*7,960	*7,960	*7,600	5,960			*4,030	*4,030	8.45 m
4.5m	kg	*16,910	*16,910	*11,300	*11,300	*9,180	8,170	*8,110	5,770	*4,280	4,250	*3,990	*3,990	9.03 m
3.0m	kg			*14,640	11,590	*10,700	7,640	*8,860	5,500	*6,770	4,140	*4,090	3,910	9.31 m
1.5m	kg			*17,010	10,690	*12,030	7,180	9,070	5,250	6,910	4,020	*4,330	3,800	9.35 m
G.L.	kg			*17,670	10,320	12,390	6,870	8,860	5,070	*6,450	3,940	*4,770	3,860	9.13 m
-1.5m	kg	*11,420	*11,420	*17,140	10,250	12,250	6,750	8,770	4,990			*5,530	4,150	8.64 m
-3.0m	kg	*18,020	*18,020	*15,650	10,370	*11,810	6,790	8,840	5,050			*6,960	4,800	7.82 m
-4.5m	kg	*17,300	*17,300	*12,830	10,690	*9,480	7,040					*8,160	6,290	6.54 m

SK380SRLC		Boom: 6.20 m Arm: 3.65 m Bucket: without Counterweight: 9,000 kg Shoe: 600 mm (Heavy Lift) Lift														
A \ B		1.5 m		3.0 m		4.5 m		6.0 m		7.5 m		9.0 m		At Max. Reach		Radius
9.0m	kg													*4,100	*4,100	6.95 m
7.5m	kg									*6,170	6,100			*3,670	*3,670	8.23 m
6.0m	kg							*7,090	*7,090	*6,900	6,020	*4,040	*4,040	*3,480	*3,480	9.08 m
4.5m	kg					*9,860	*9,860	*8,320	8,280	*7,490	5,790	*6,360	4,250	*3,430	*3,430	9.61 m
3.0m	kg					*13,240	11,860	*9,920	7,710	*8,310	5,500	7,020	4,110	*3,490	*3,490	9.88 m
1.5m	kg					*16,050	10,780	*11,410	7,170	9,030	5,200	6,850	3,960	*3,650	3,390	9.91 m
G.L.	kg			*6,010	*6,010	*17,320	10,220	12,320	6,790	8,780	4,980	6,720	3,840	*3,960	3,440	9.71 m
-1.5m	kg	*6,950	*6,950	*10,190	*10,190	*17,270	10,030	12,100	6,610	8,640	4,850	6,670	3,790	*4,480	3,660	9.25 m
-3.0m	kg	*11,260	*11,260	*15,420	*15,420	*16,190	10,080	*12,070	6,590	8,640	4,850			*5,400	4,150	8.49 m
-4.5m	kg			*19,470	*19,470	*13,930	10,330	*10,410	6,750					*7,320	5,190	7.34 m

Note:

- Do not attempt to lift or hold any load that is greater than these lift capacities at their specified lift point radius and heights. Weight of all accessories must be deducted from the above lift capacities.
- Lift capacities are based on machine standing on level, firm, and uniform ground. User must make allowance for job conditions such as soft or uneven ground, out of level conditions, side loads, sudden stopping of loads, hazardous conditions, experience of personnel, etc.
- Bucket pin attachment point defined as lift point.
- The above lift capacities are in compliance with ISO 10567. They do not exceed 87% of hydraulic lift capacity or 75% of tipping load. Lift capacities marked with an asterisk(*) are limited by hydraulic capacity rather than tipping load.
- Operator should be fully acquainted with the Operator's and Maintenance Instructions before operating this machine. Rules for safe operation of equipment should be adhered to at all times.
- Lift capacities apply to only machine as originally manufactured and normally equipped by KOBELCO CONSTRUCTION MACHINERY CO., LTD.

Standard and Optional Equipment

●=Std ○=Opt

Category	Description	SK380SRLC-7
		Mono Boom
Engine	ISUZU 6HK1 (Tier IV Final certified)	●
	Exhaust DOC SCR system	●
	Alternator 24 V /90 A	●
	Starter motor 24 V/5 kW	●
	Batteries 2 x 12V (140Ah)	●
	Fan suction type cooling system	●
	Auto deceleration function	●
	Auto idle stop	●
Hydraulic system	3 work modes H, S, Eco	●
	Power boost (37.8 MPa (385 kgf/cm ²))	●
	Heavy lift mode	●
	Pressure release function	●
	Independent travel function	●
	Auto warm up system	●
	Proportional Hand Control (for NGB piping)	●
	Proportional Hand Control (for E&NGB piping)	●
	Hydraulic oil VG46	●
		●
Piping	NGB piping	●
	E & NGB piping	●
	QH piping	●
Cabin	Air suspension seat with heating	●
	10 inch colour monitor	●
	LED door light	●
	Air-conditioner	●
	Radio (FM/AM & AUX & USB & Bluetooth® & hands free telephone)	●
	Harness for cab four lights and cab yellow flasher	●
	Intermittent windshield wiper	●
	12V power supply	●
	Rain visor	○
		○
Lights	LED work lights ; 2 on boom, 1 on upper frame, 2 on rear counterweight	●
	LED work lights ; 2 on cab top front	○
Working equipment	Standard boom (6.20 m)	●
	Long arm (3.65 m)	○
	Standard arm (3.10 m)	○
	Short arm (2.40 m)	○
Counter weight	Standard C/W with swing flasher	●
Undercarriage	600 mm steel shoe	●
	600 mm double grouser shoe	○
	700 mm steel shoe	○
	800 mm steel shoe	○
	850 mm steel shoe	○
	Track guide (one per side)	●
	Additional track guides (two additional per side)	●
	Lower frame guard	●
		●
		●
Safety	Engine emergency stop switch	●
	Pump emergency mode (KPSS release switch)	●
	Emergency accel dial	●
	Emergency manual valve for lowering attachment	●
	Safety valve for boom & arm cylinder	●
	ROPS compliant cab (ISO 12117-2:2008)	●
	OPG Level II top guard (ISO 10262;1998)	●
	OPG Level II front guard (ISO 10262;1998)	●
	Eagle-eye view camera (Rear, Right, Left)	●
	Seatbelt indicator on display	●
	Travel alarm	●
		○
		○
Others	Refueling pump	○
	Harness for engine room light	●
	RAL color	○
	GEOSCAN	●

*The air conditioning system on this machine contains fluorinated greenhouse gas HFC-134a (GWP 1430). Quantity of gas 0.8 kg (CO² equivalent 1.2 t).

Note: Bluetooth® is a registered trademark of the Bluetooth SIG Inc.

Note: This catalogue may contain attachments and optional equipment that are not available in your area. And it may contain photographs of machines with specifications that differ from those of machines sold in your areas. Please consult your nearest KOBELCO distributor for those items you require. Due to our policy of continuous product improvements all designs and specifications are subject to change without advance notice. Copyright by **KOBELCO CONSTRUCTION MACHINERY CO., LTD.** No part of this catalogue may be reproduced in any manner without notice.

KOBELCO CONSTRUCTION MACHINERY CO., LTD.

5-15, Kitashinagawa 5-chome, Shinagawa-ku, Tokyo 141-8626 JAPAN
Tel: +81 (0) 3-5789-2146 Fax: +81 (0) 3-5789-2135
www.kobelcocm-global.com

Inquiries To: